

# **RocketRAID 232x Controller MacOS X Installation Guide**

Version 1.01

Copyright © 2006 HighPoint Technologies, Inc.

All rights reserved.

Last updated on Mar 9, 2006

# 1 Overview

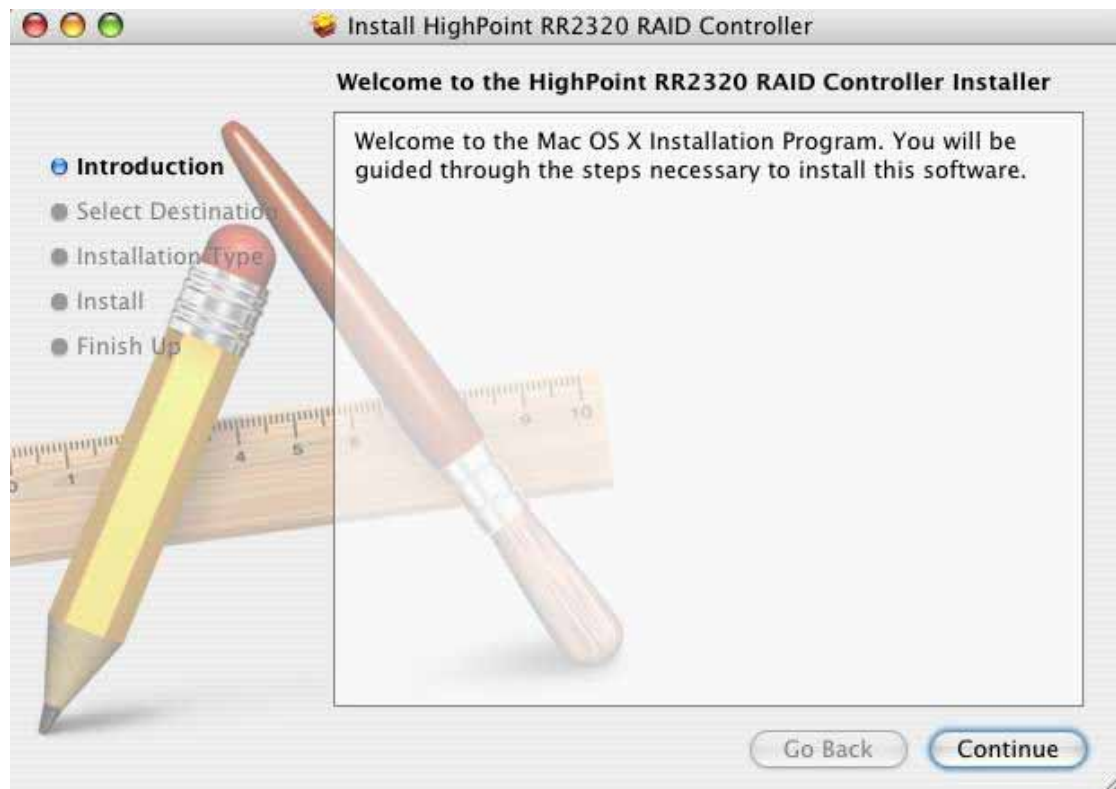
This document describes how to install and use RocketRAID 232x Controller software on a MacOS X system. It is assumed that you have physically installed the controller into a PCI-E slot on your system.

The software contains one installation package, rr232x.mpkg, which contains driver and HighPoint Web RAID Management Service.

Before installing the software, you should log onto the system as System Administrator.

## 2 Installing the package

1) Double click the package named rr232x.mpkg to start the installer.



2) Click **Continue** button.



The installer will ask you to select a destination for the driver. Make sure to select the boot volume since the driver has to be installed to /System/Library/Extensions/ folder.

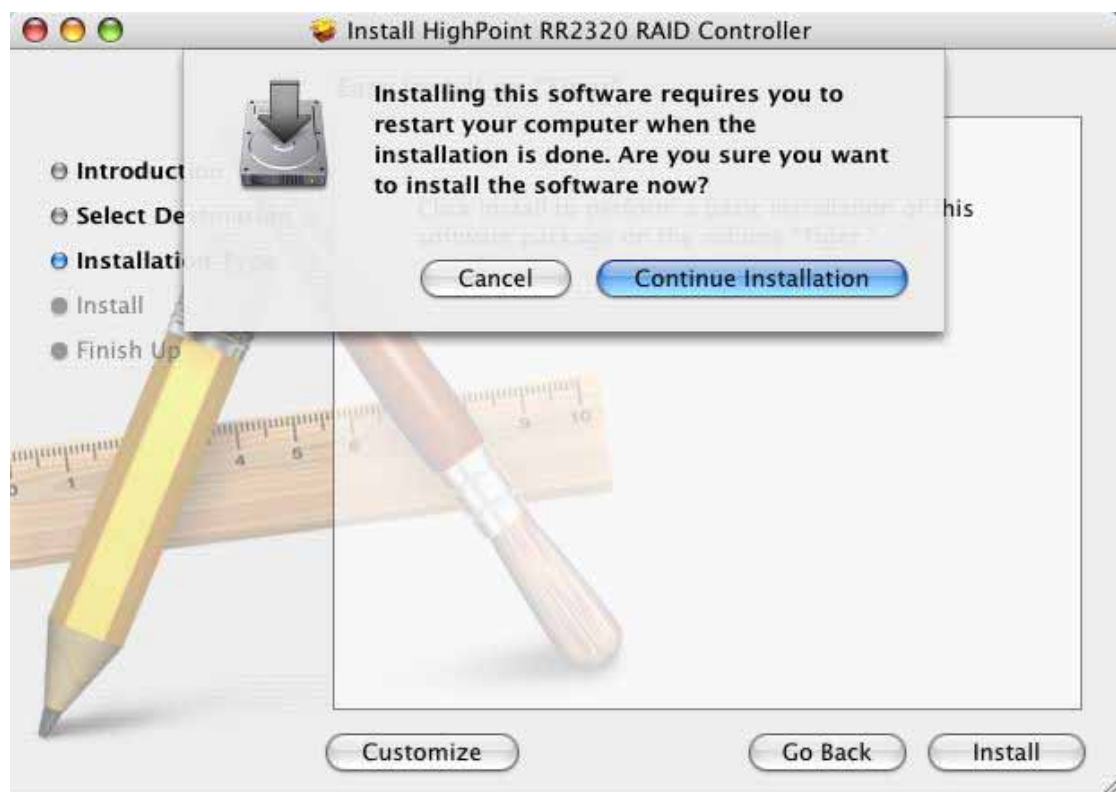
3) Click **Install** button.



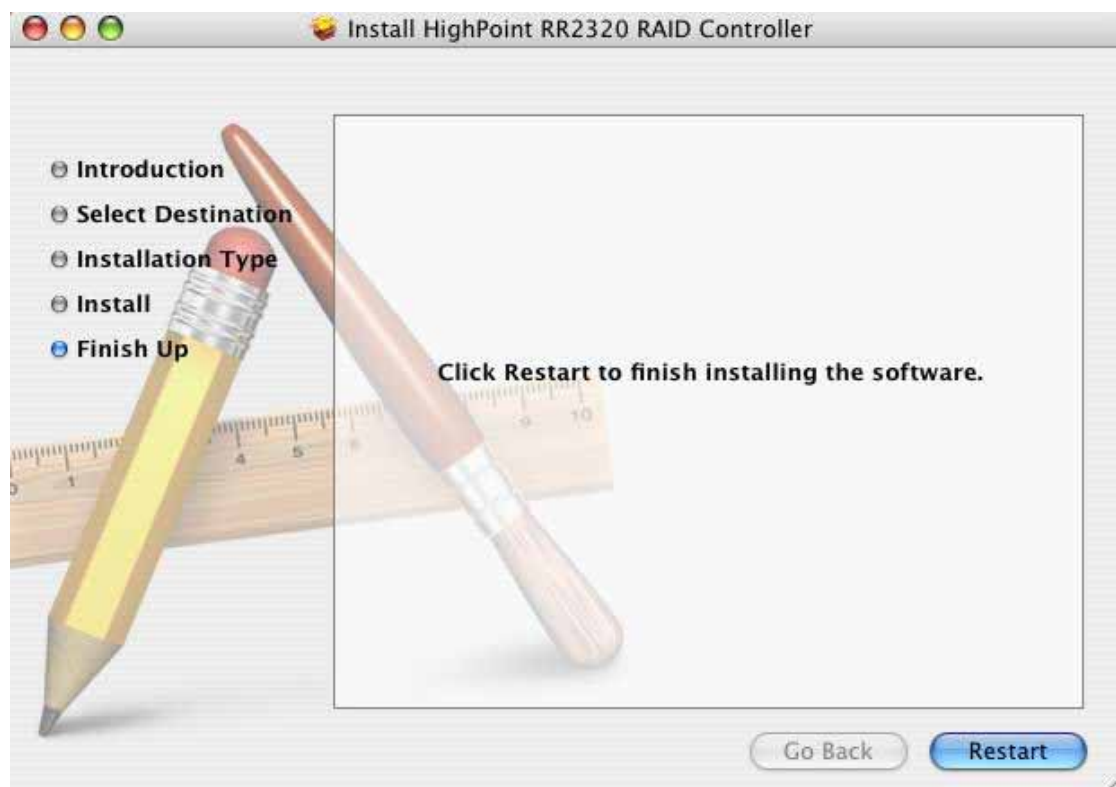
You will be prompted that click the install button will install a basic installation of the

software package on you selected volume, And that click it.

4) You will be prompted that a reboot is needed to install the software. Click “**Continue Installation**”.



5) The driver will be installed to system. Click “Restart” to restart the system.



After the system is restarted, you can use a web browser to configure the controller and setup RAID arrays, and use MacOS X Disk Utility to create partitions on the RAID arrays.

### 3 Web RAID Management Interface

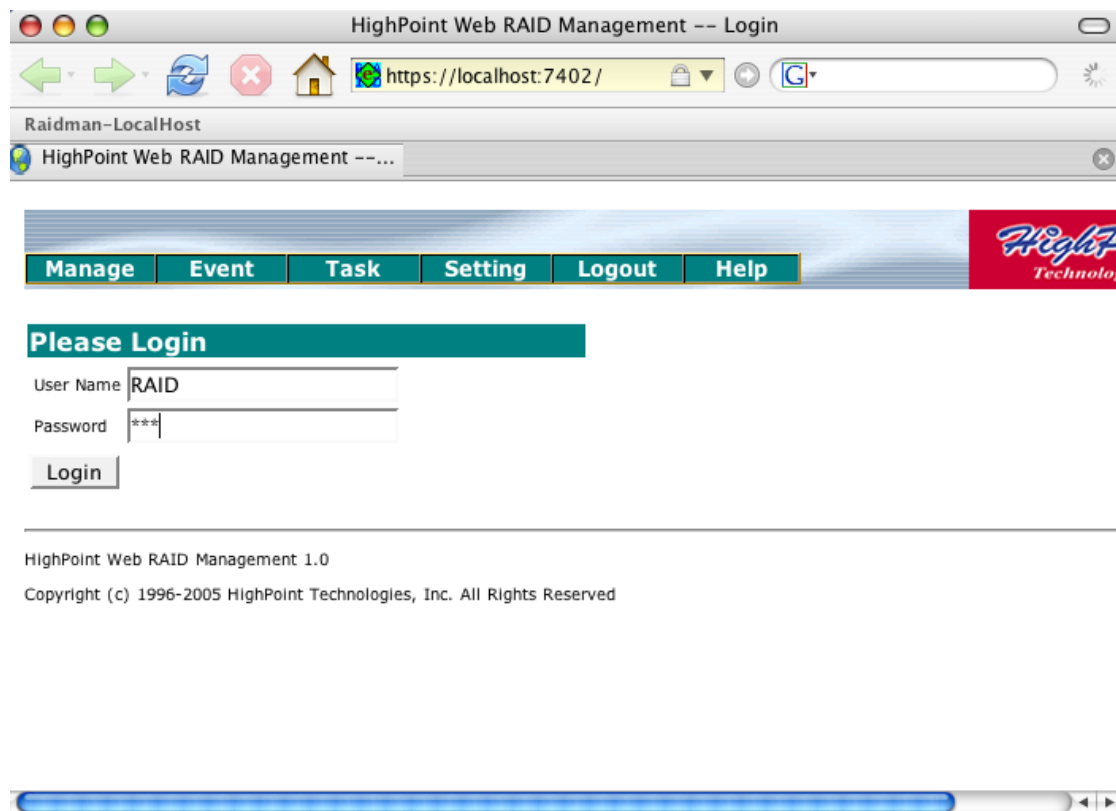
**Note:** To use the web-based RAID management interface, a web browser with XML support is required, e.g. Safari, Internet Explorer 6.0, Mozilla or FireFox.

To run the management interface, start your browser and enter the following URL address:

<https://localhost:7402>

If you are managing a remote system please change "localhost" to the server's host name or IP address.

The initial user name is "**RAID**" and the initial password is "**hpt**". You can change the password once you logged in. *Note: the login information is saved in /etc/hptuser.dat. If you forget the password you can remove this file to reset the password.*



If you can't connect to local system, please check if a process named hptsvr is running on the system. If hptsvr is not running, you can start it manually by running "/Library/StartupItems/Hptsvr/hptsvr".

If you can't connect to a remote system, check if hptsvr is running on that system and you can access the remote system via TCP/IP connection. If you have firewall configured, make sure TCP port 7402 is not blocked.

## 4. Uninstalling

To uninstall the driver and management software you can simply remove the files copied to your system. Drag /System/Library/Extensions/hptmv6.kext to the trash and reboot to uninstall driver. Drag /Library/StartupItems/Hptsrv and /usr/share/hpt to the trash and reboot to uninstall driver.