

# **Pro~Fry**

*Clean-oil System*



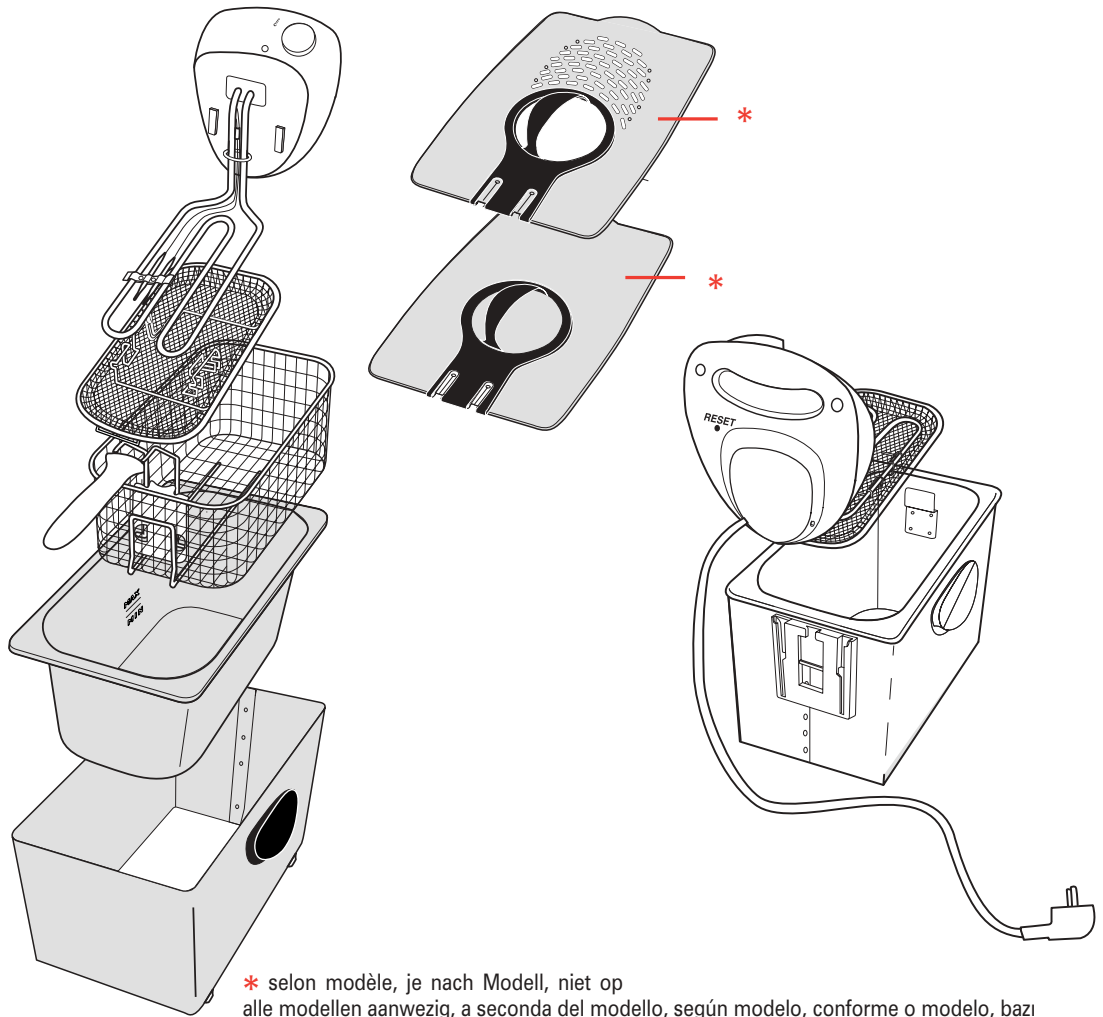
# **Pro~Fry**

*Clean-oil System*

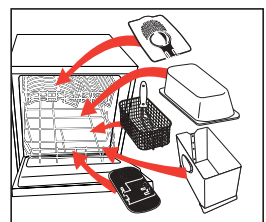
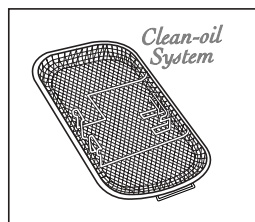
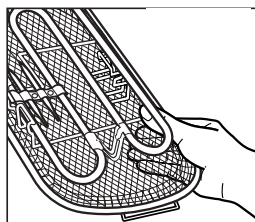
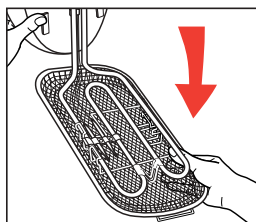
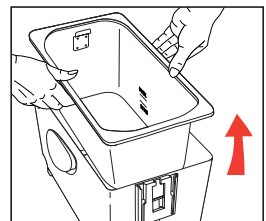
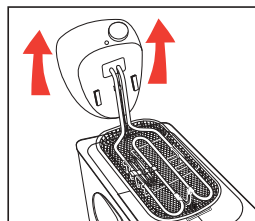
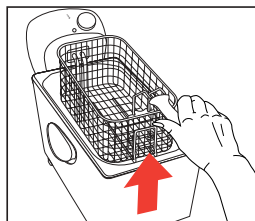
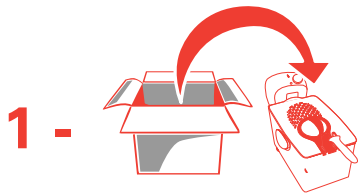


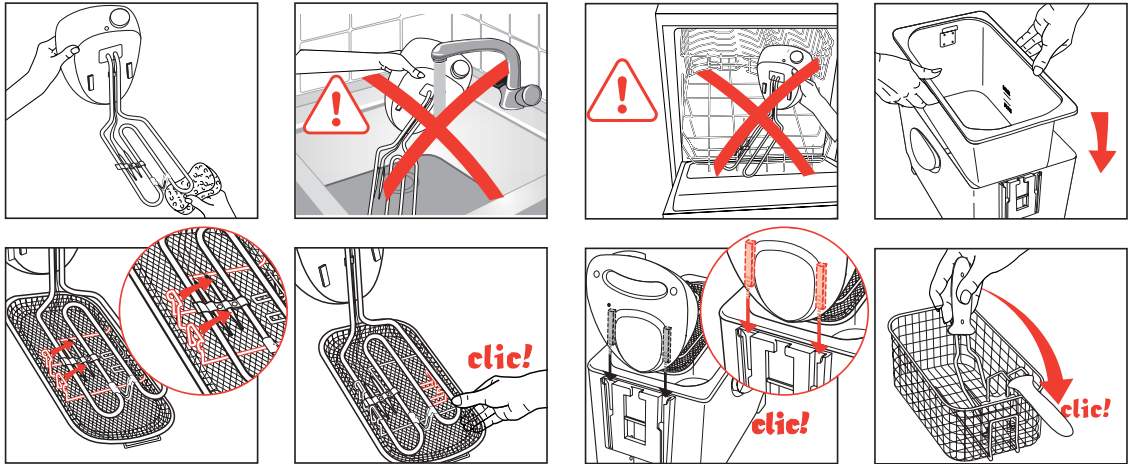
---

[www.groupeseb.com](http://www.groupeseb.com)

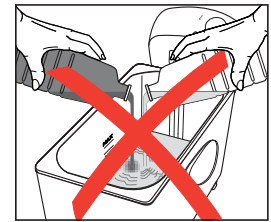
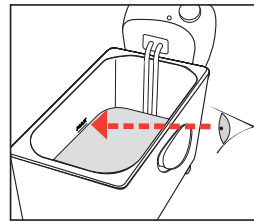
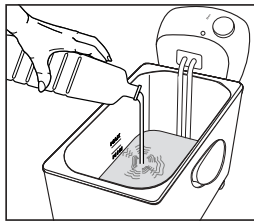


\* selon modèle, je nach Modell, niet op alle modellen aanwezig, a seconda del modello, según modelo, conforme o modelo, bazı modellerde, afhængig af model, beroende på modell, kun på noen modeller, mallista riipruen, ανάλογα με το μοντέλο, в зависимости от модели, w zależności od modelu, podle modelu, podl'a modelu, modelltöl fúggöen, според модела,

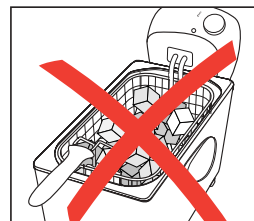
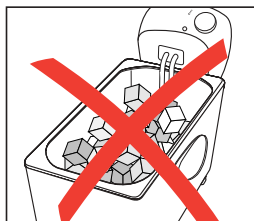
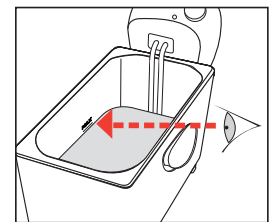
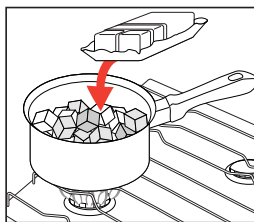




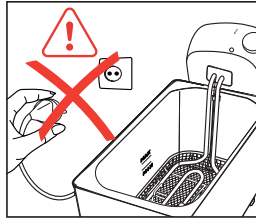
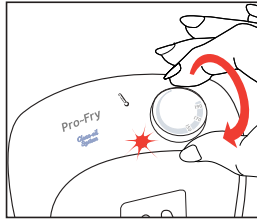
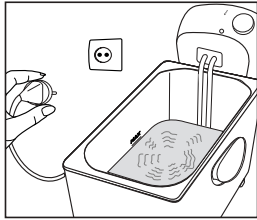
Model	2 L	3 L	4 L
Min.	1,8 l	2,5 l	3,5 l
Max.	2 l	3 l	4 l



Model	2 L	3 L	4 L
Min.	1,6kg	2,2kg	3,1kg
Max.	1,75 kg	2,6 kg	3,5kg



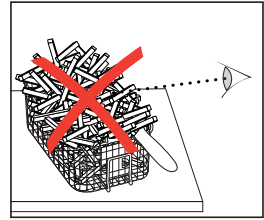
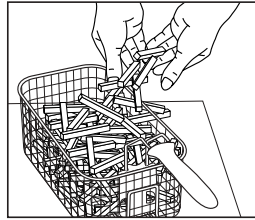
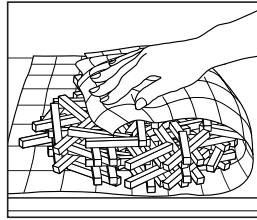
### 3 -



4 L  
3 L  
2 L

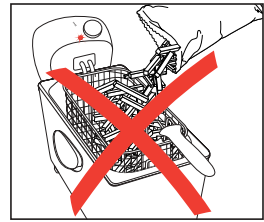
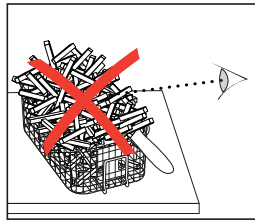
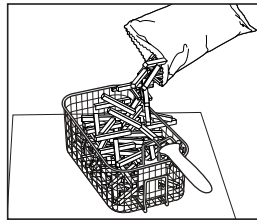


+/- 1 000 g  
+/- 800 g  
+/- 600 g

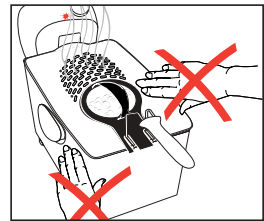
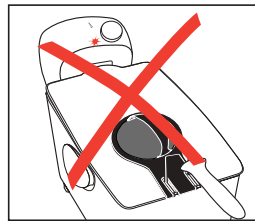
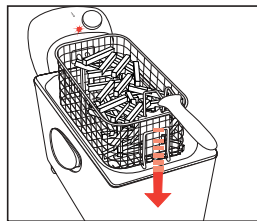
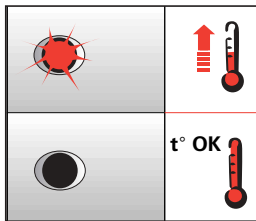
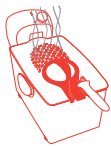


4 L  
3 L  
2 L

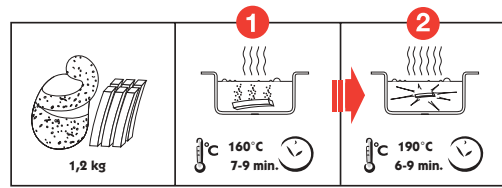
+/- 900 g  
+/- 600 g  
+/- 450 g



### 4 -



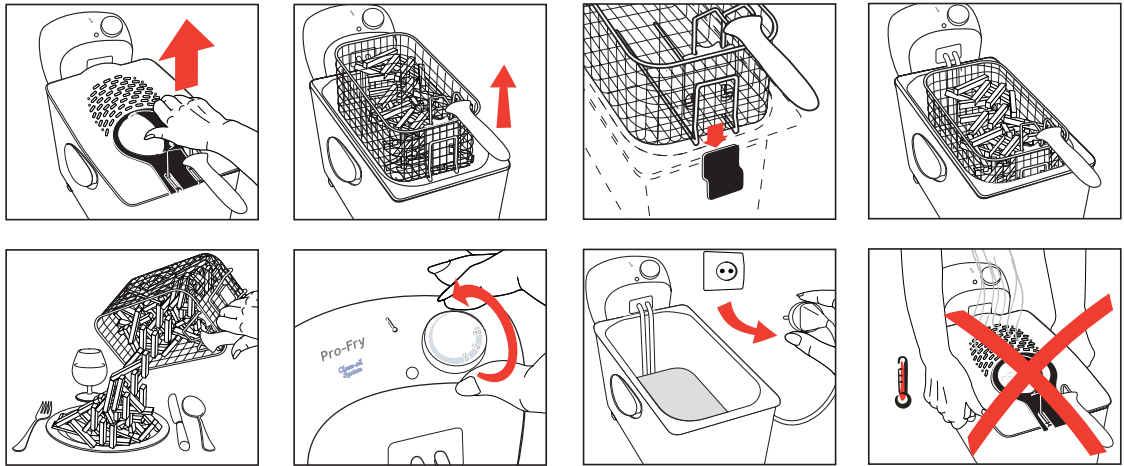
**5 -**



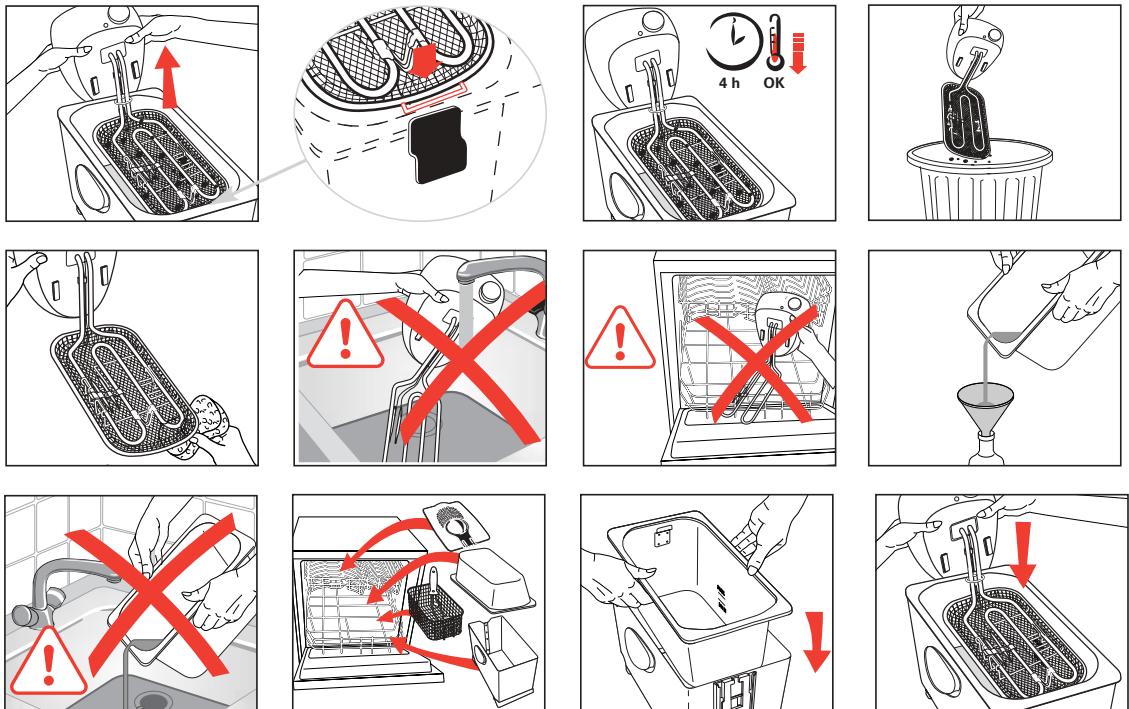
	Nb			
		1200 g	<b>1</b> 160°C <b>2</b> 190°C	+/- 7 - 9 min. +/- 6 - 9min.
		1000 g	190°C	+/- 11 - 16 min.
		800 g	190°C	+/- 9 - 12 min.
		600 g	190°C	+/- 12 - 13 min.
	8		180°C	+/- 14 - 15 min.
		400 g	160°C	+/- 6 - 7 min.
		400 g	150°C	+/- 8 - 10 min.
	8 - 9		170°C	+/- 5 - 6 min.

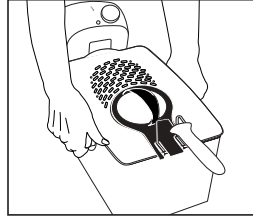
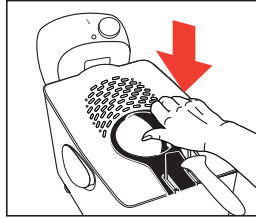
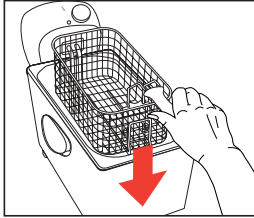
	Nb			
		900 g	190°C	+/- 8 - 13 min.
		600 g	190°C	+/- 7 - 9 min.
		450 g	190°C	+/- 7 - 9 min.
	12		190°C	+/- 5 - 6 min.
	10 - 12		190°C	+/- 7 - 8 min.
	8 - 9		190°C	+/- 5 - 7 min.
	8 - 9		190°C	+/- 5 - 7 min.

# 6 -

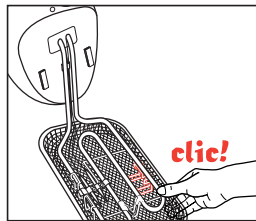
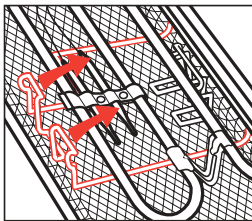
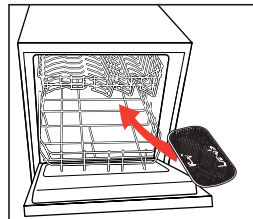
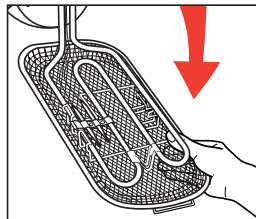
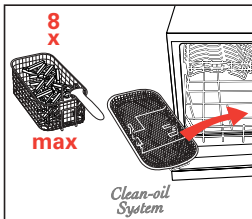
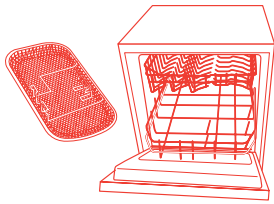


# 7 -





8 -



9 -

