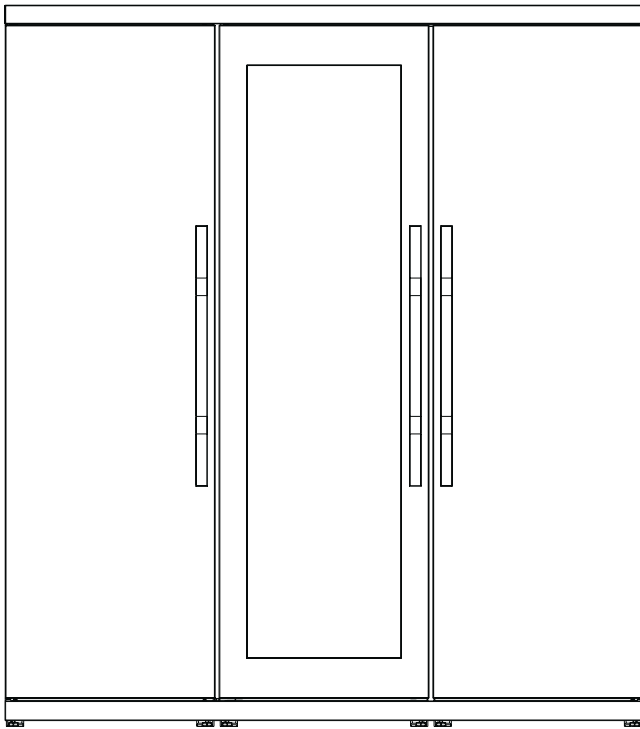


SBSKITC

Side by Side

Instruction manual



John Lewis

Important information

- Do not install the unit on your own or have unqualified personnel install it.
- Improper installation may result in damage, malfunctioning or risk of electric shock.
- This Side by Side unit must have the cooler section on the right side, the beverage storage section in the middle and the freezer section on the left side; the positions are not reversible.
- The power cords must be connected separately to a suitable socket.
- All information regarding each section of this equipment is given in the user instructions to be found inside the cooler section. Please read the instructions carefully before carrying out any operation.
- Removal and reinstallation of this unit must only be carried out by authorized personnel.
- Please keep these installation instructions for future reference or further installation.

Tools required for installation

(not supplied)

Ⓢ SCREW DRIVER WRENCH 10mm

Ⓣ HAMMER

Ⓤ SCREW DRIVER PHILIPS 2

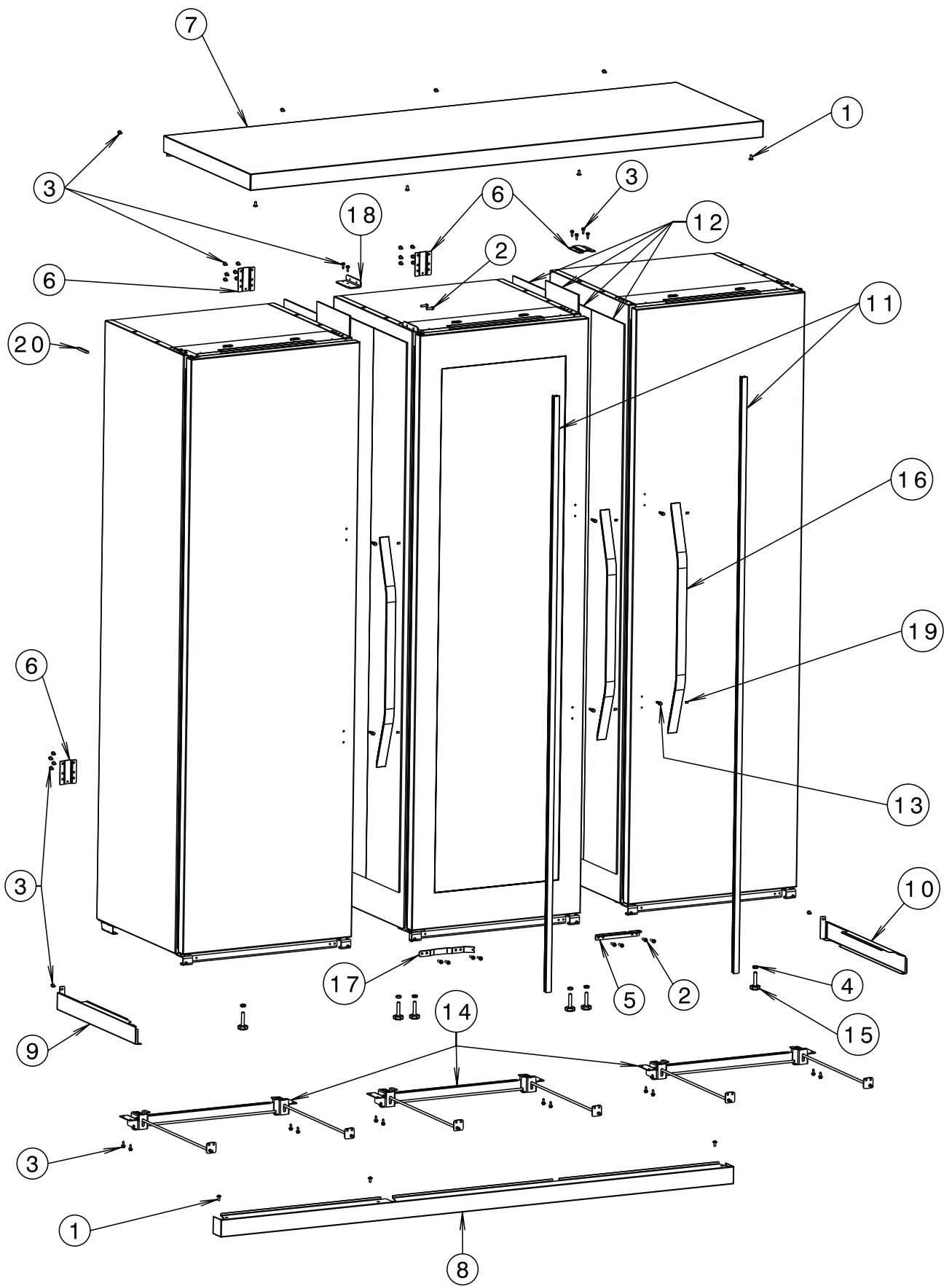
Ⓥ SCREW DRIVER WRENCH 7mm

Ⓦ WRENCH 13mm

Ⓧ WRENCH 24mm

Ⓨ L SHAPED 2.5mm HEXAGONAL

Ⓩ LEVEL



① CUPHEAD SCREW M5x12 (bag 1) ① U



② HEXAGON-HEAD SCREW M5x18 (bag 2) ① V ① U



③ HEXAGON-HEAD SCREW 4.2x13 (bag 3) ① V ① U



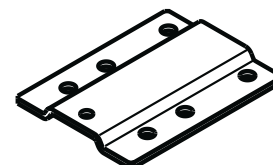
④ HEXAGON NUT M8 C15 (bag 4) ① W



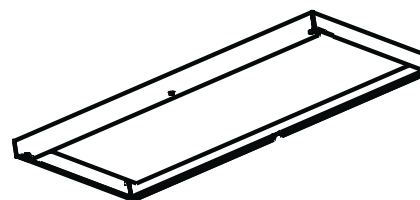
⑤ LOWER CONNECTION BRACKET



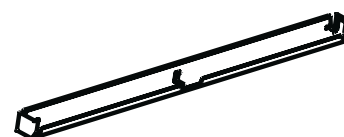
⑥ UPPER CONNECTION BRACKET



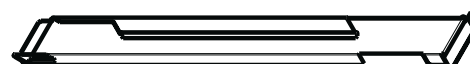
⑦ TOP PANEL



⑧ PLINTH



⑨ LEFT SIDE



⑩ RIGHT SIDE STRIP



⑪ GASKET TRIM



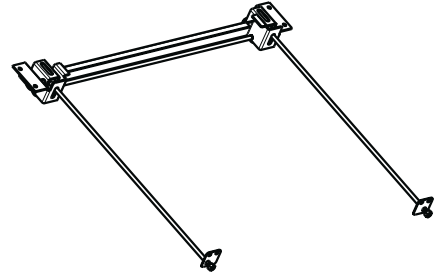
12 SPACER SPONGE



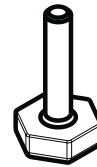
13 HEXAGONAL HEAD PIVOT (V)



14 ADJUSTABLE REAR FEET (S) (V)



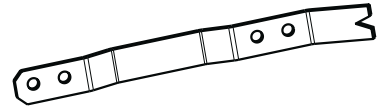
15 FRONT FOOT (X)



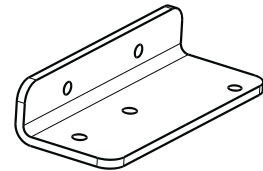
16 COOLER HANDLE



17 LOWER CONNECTION BRACKET



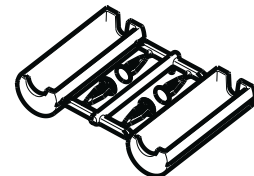
18 UPPER CONNECTION BRACKET



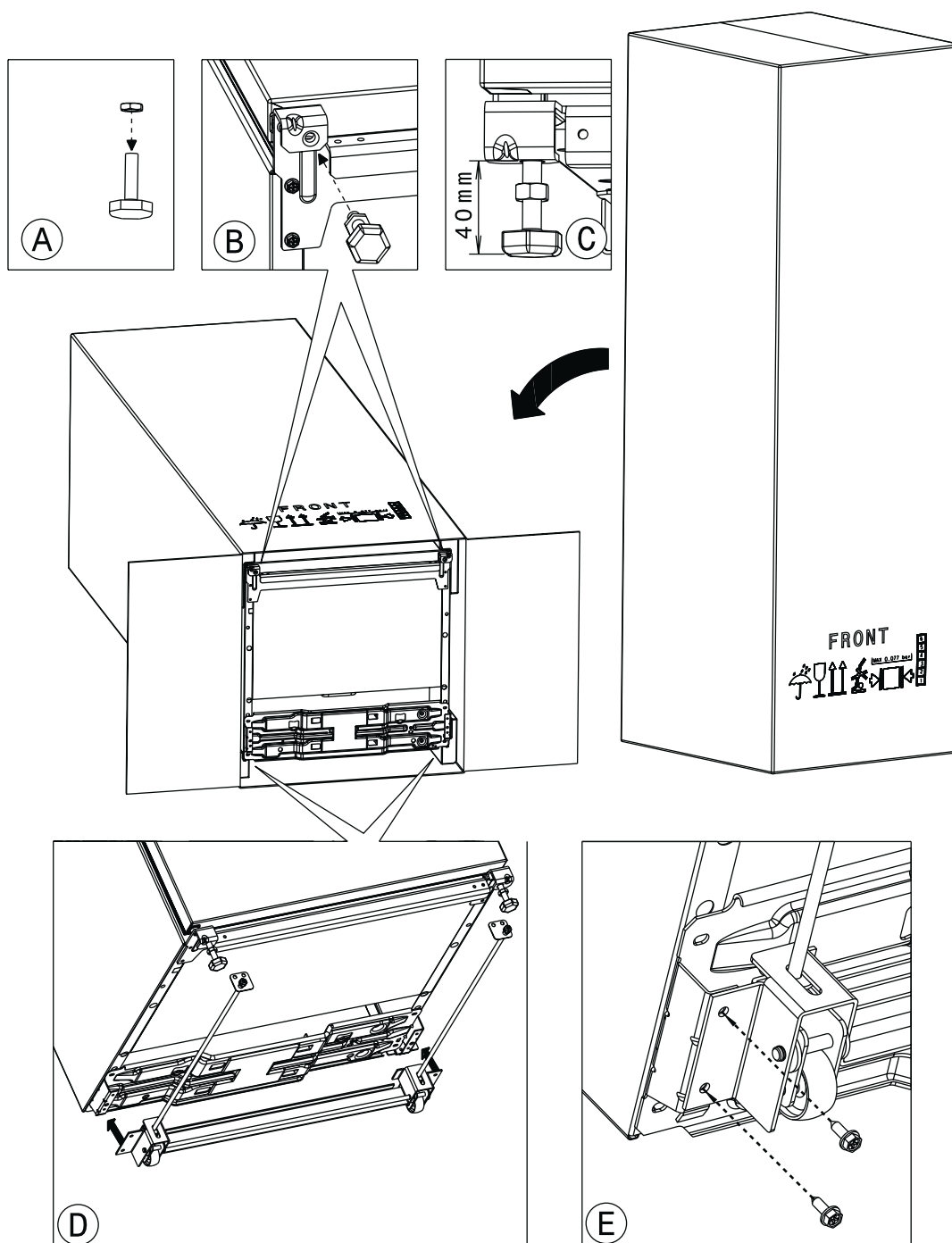
19 GRUB M5x8, TOOL (Y)



20 REAR SPACER
(PLACED IN THE COOLER APPLIANCE)

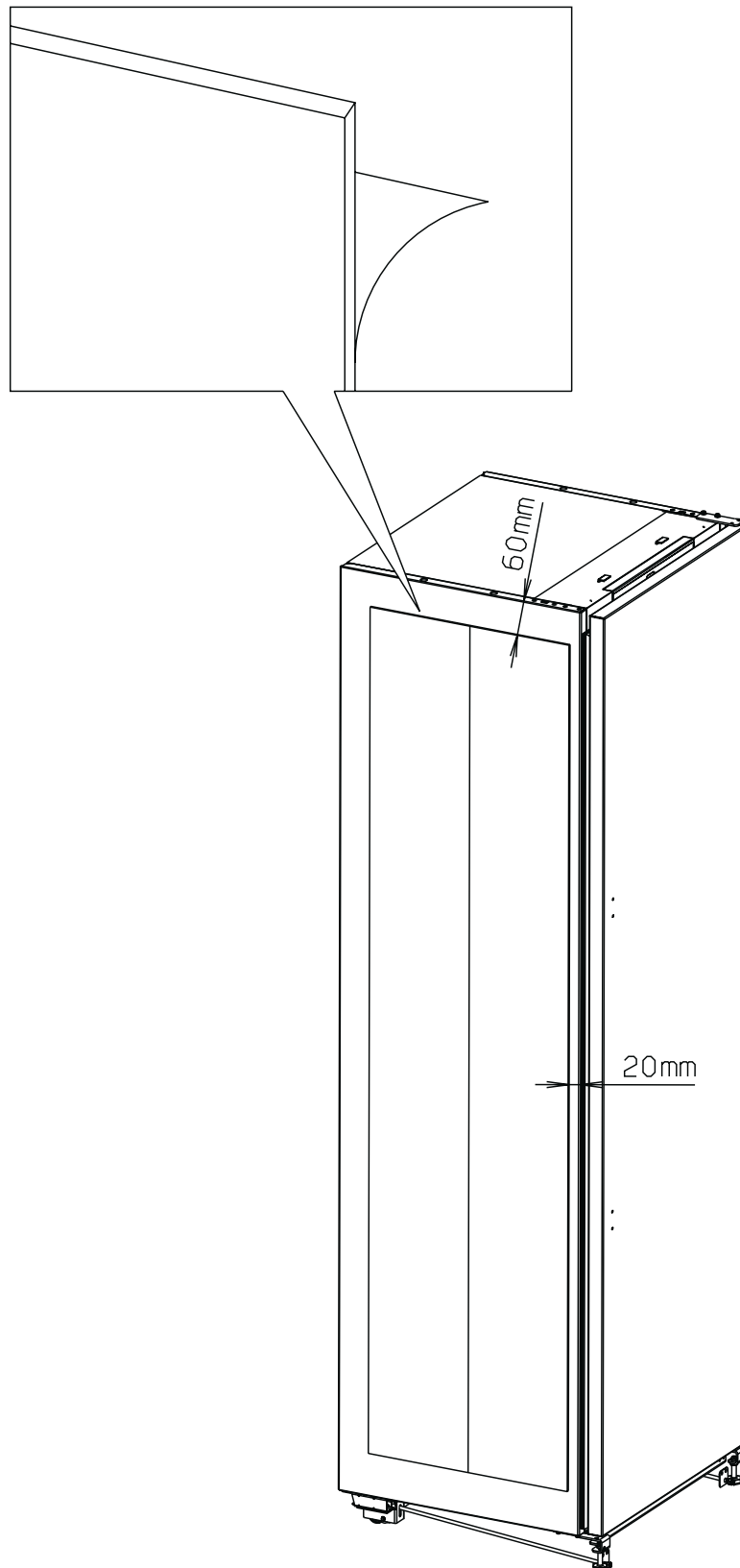


- Carefully place the unit on the floor, following the instructions on the packaging to make sure the unit is facing upwards.
- Open the bottom part of packaging and remove the corner protection.
- Screw the M8 nuts (4) (bag 4) on the respective front feet , see Fig. (A).
- Screw the front feet (15) on the bracket of the unit see Fig. (B) using the dimension indicated in Fig. (C).
- Position the adjustable rear feet (14) on the compressor support plate, see Fig. (D).
- Fix the adjustable rear feet (14) with four 4.2x13 self-tapping screws (3) (bag 5) using the holes in the compressor support plate see Fig. (E).
- Carefully reposition the appliance in the upright position and remove the packaging completely.
- Operation to be carried out on each units.

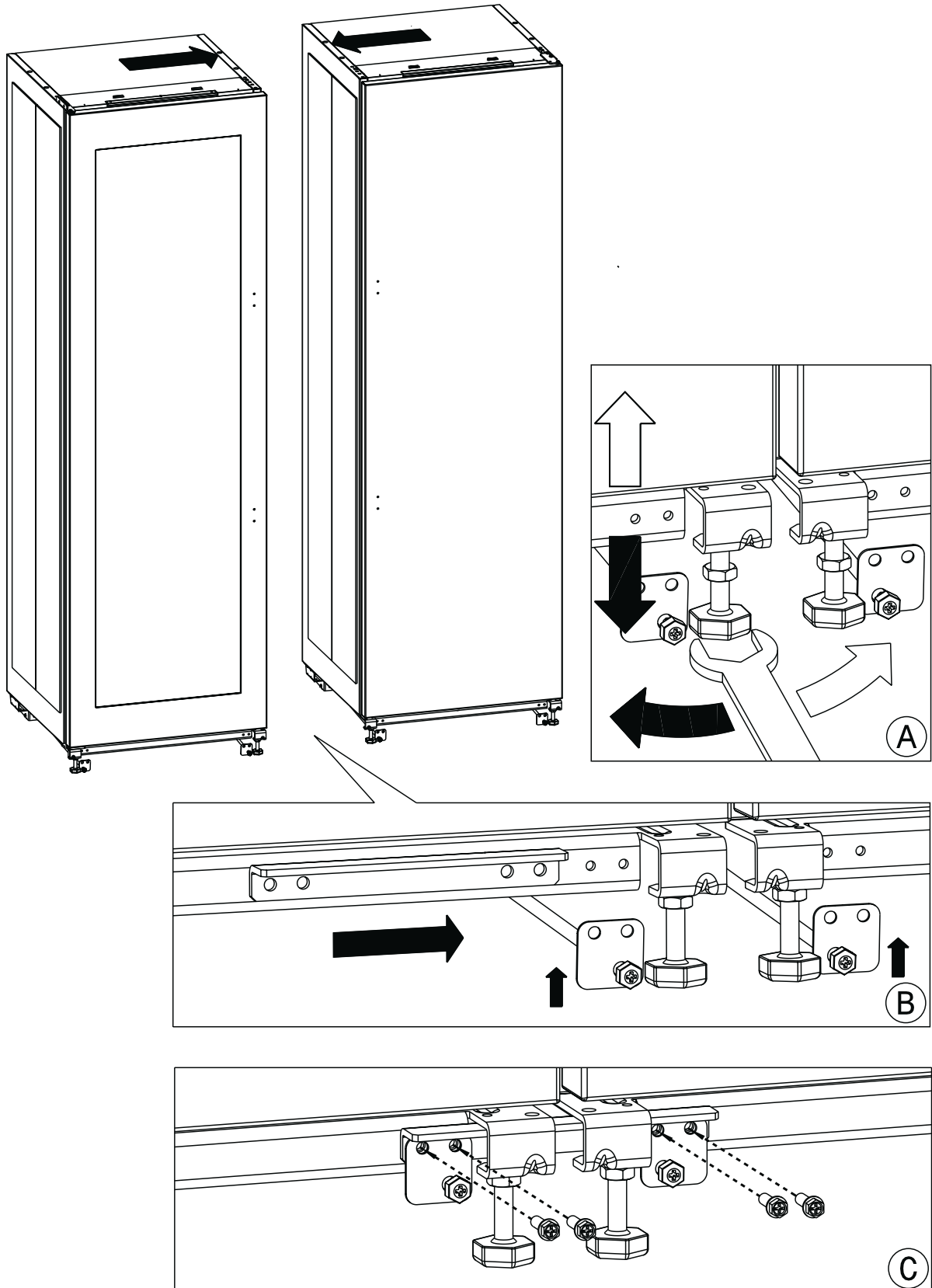


- Glue two spacer spongers on the right side of the freezer.
- Glue two spacer spongers on both sides of the wine cooler.
- Glue two spacer spongers on the left side of the cooler.

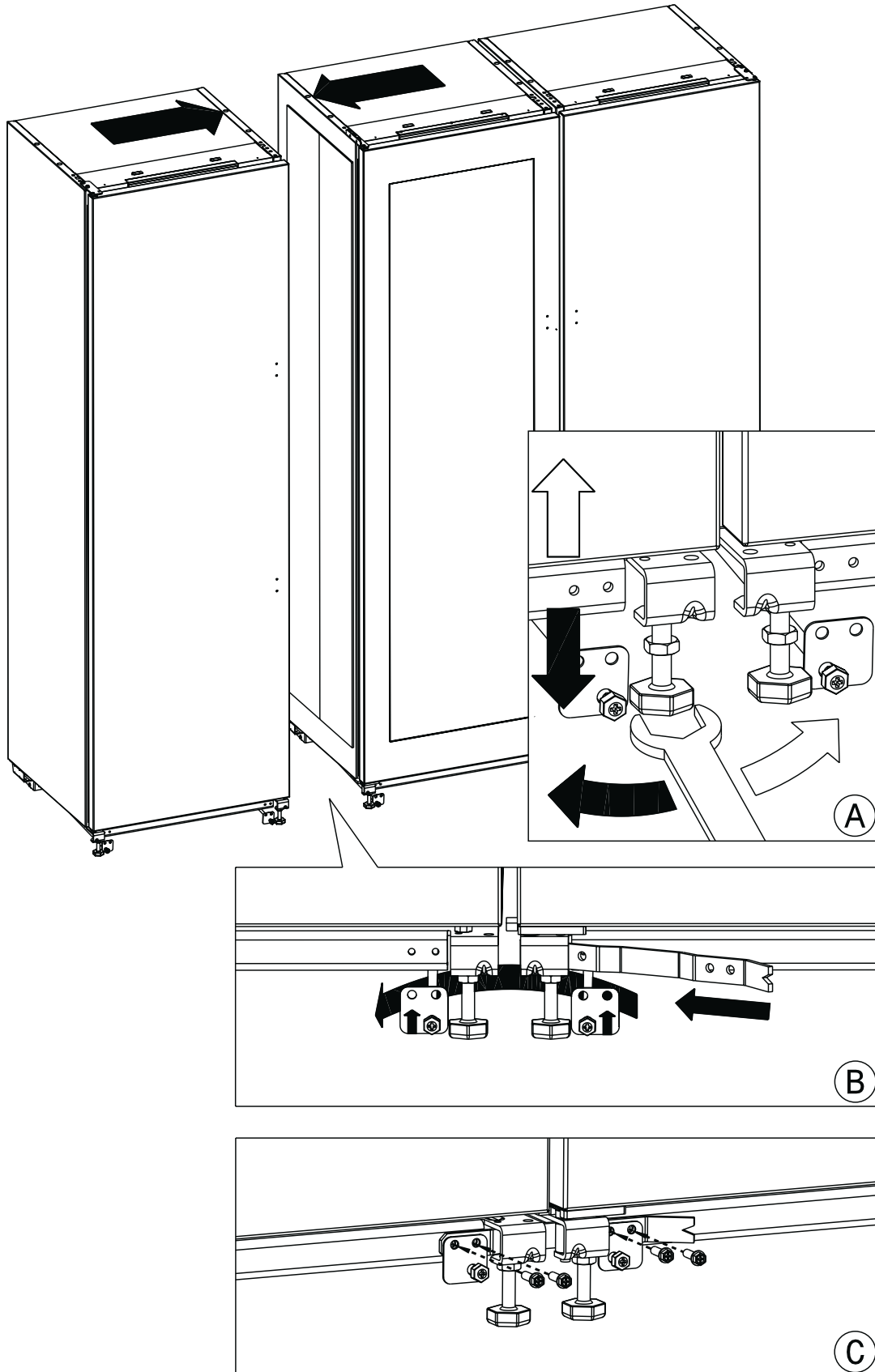
Use the distances indicated in the fig. under neath.



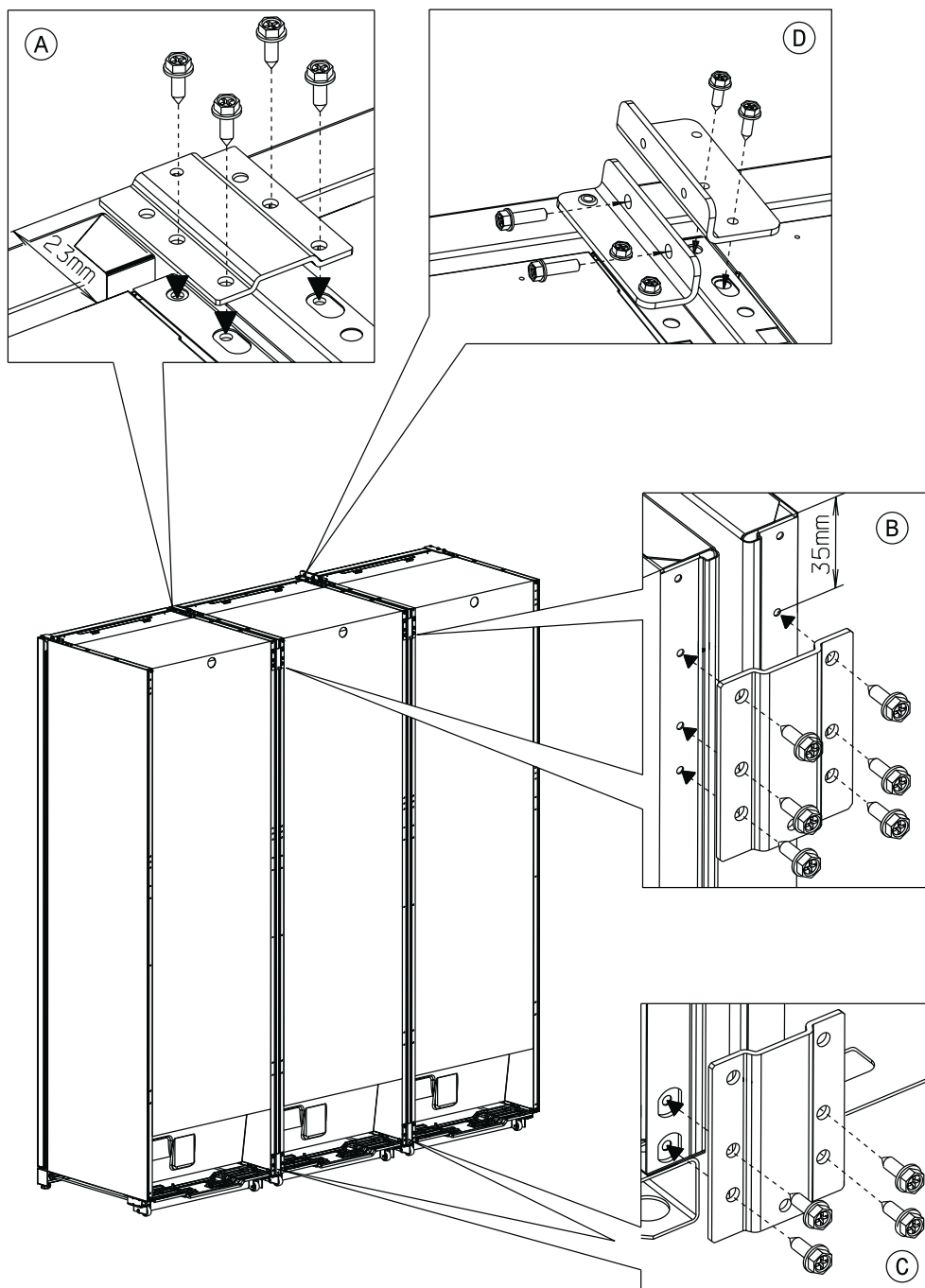
- Bring the wine cooler unit near to cooler unit.
- If necessary adjust the front feet so that the units are both the same height, see Fig. (A).
- Insert joining bracket (5) and put the front of the adjustable rear feet (14) like Fig. (B).
- Fix the joining bracket and the adjustable rear feet with four M5x18 screws (bag (2)), see Fig. (C).



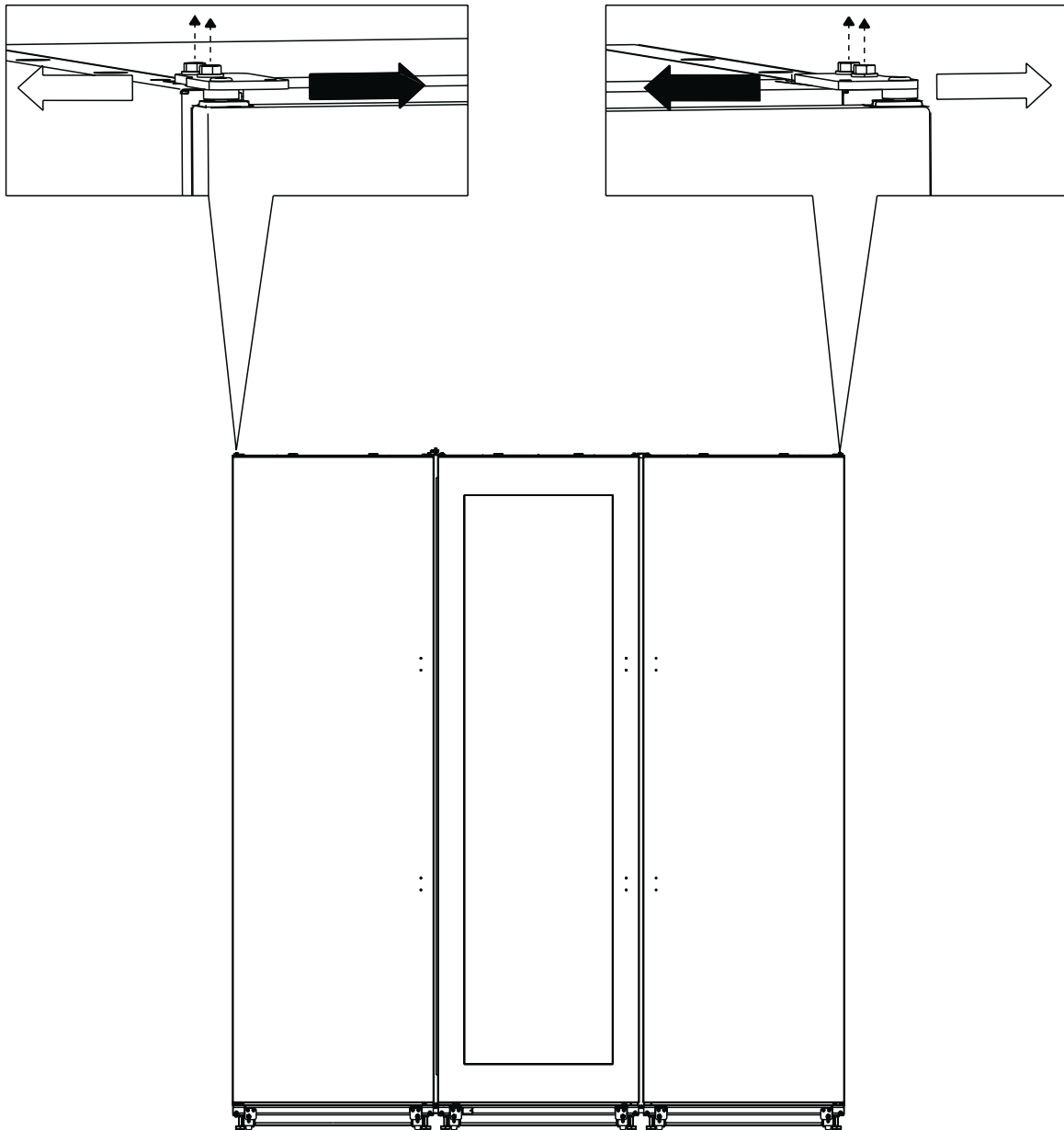
- Repeat the operation between freezer unit and wine cooler unit.
- If necessary adjust the front feet so that the units are both the same height, see Fig. (A).
- Insert joining bracket (17), see Fig. (B).
- Fix the joining bracket and the adjustable rear feet with four M5x18 screws (bag (2)), see Fig. (C).



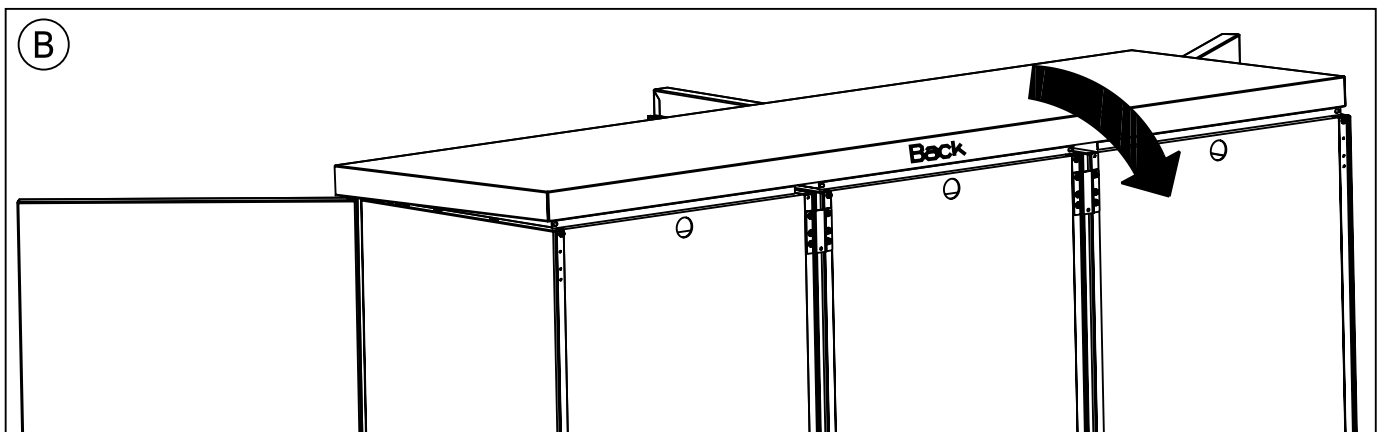
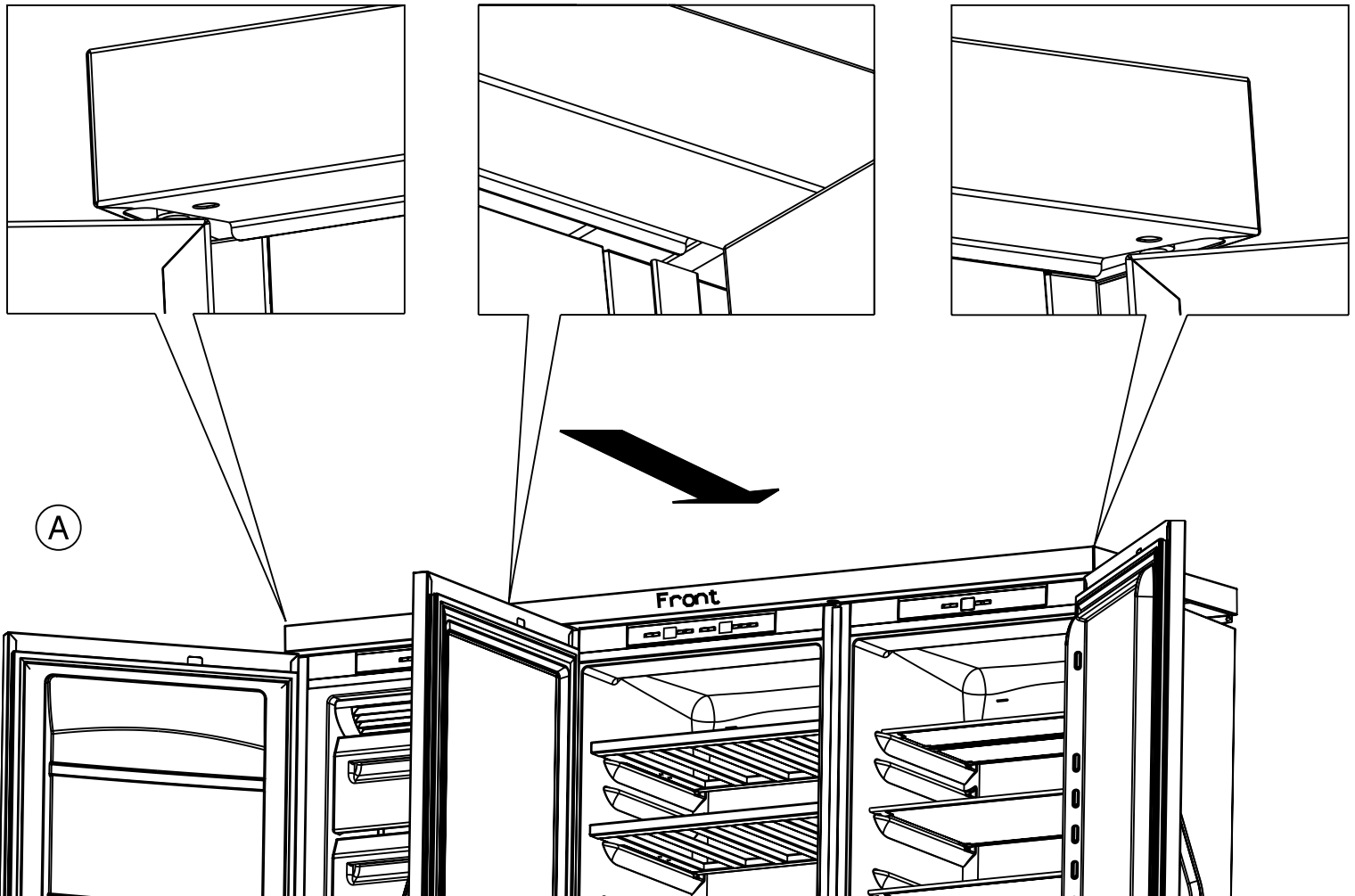
- Fix the joining bracket (6) with four 4.2x13 self-tapping screws (3) (bag 3) using the holes in the top of the sides, see Fig. (A).
- The bracket must be positioned so that the side of the bracket with the hole in the centre part protrudes as shown in fig. (A) (see dimension).
- Fix the joining bracket (18) with two 4.2x13 self-tapping screws (3) (bag 3) using the holes in the top of the freezer side, see Fig. (D).
- Fix the joining bracket (18) with the wine cooler upper hinge using two M5x18 screws (bag 2), see Fig. (D).
- Fix the joining bracket (6) with six 4.2x13 self-tapping screws (3) (bag 3) using the holes in the sides, see Fig. (B).
- Fix the joining bracket (6) with four 4.2x13 self-tapping screws (3) (bag 3) using the holes in the sides, see Fig. (C).
- The bracket must be positioned so that the side with middle hole is turned down as shown in fig.(C).



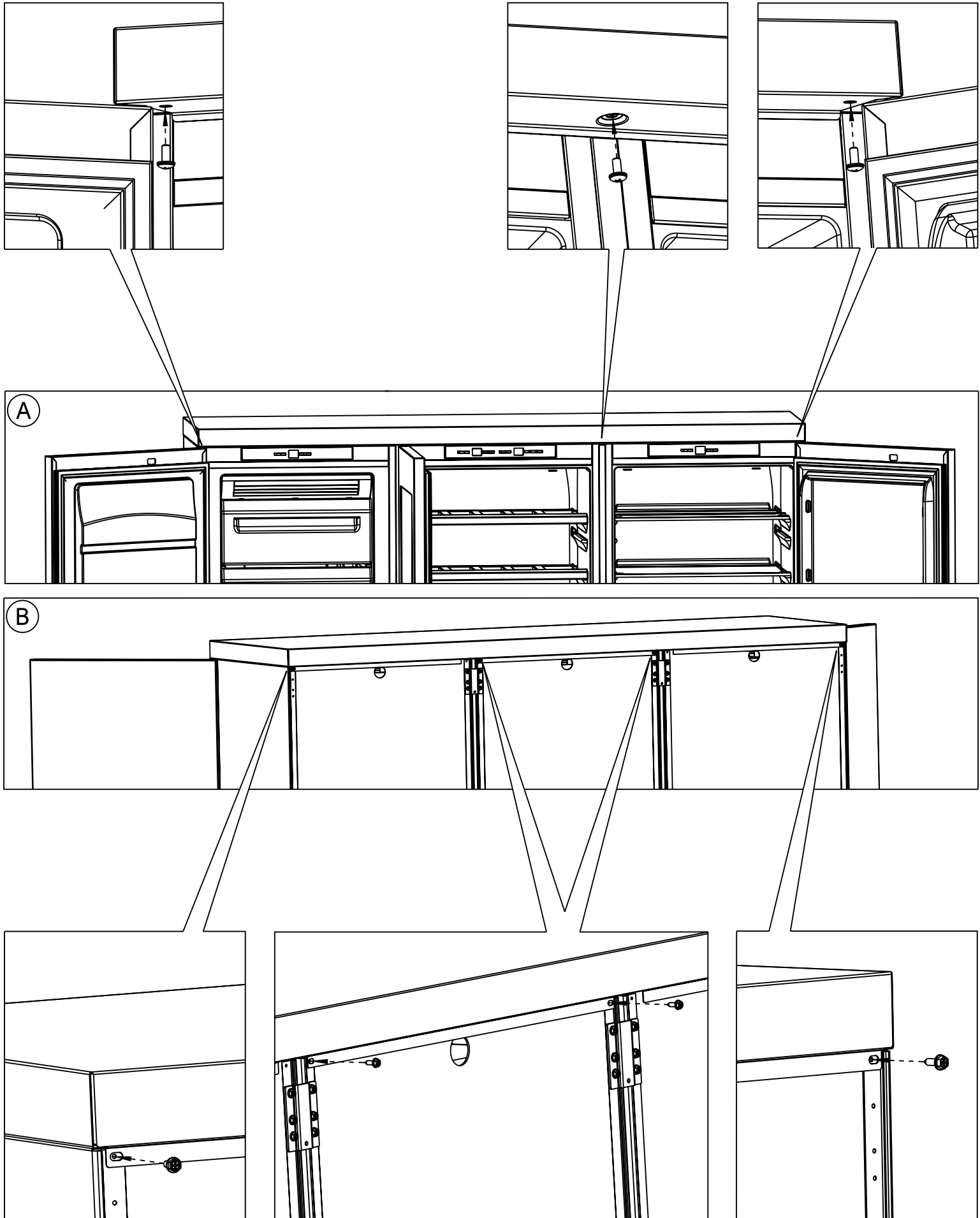
- If it is necessary to amend the level of the doors (only cooler and freezer units), partially unscrew the hinge screws, related to the door to be adjusted, and move the hinge as indicated in the illustration below.
- Repeat the operations for the cooler and freezer doors until a correct alignment is obtained.



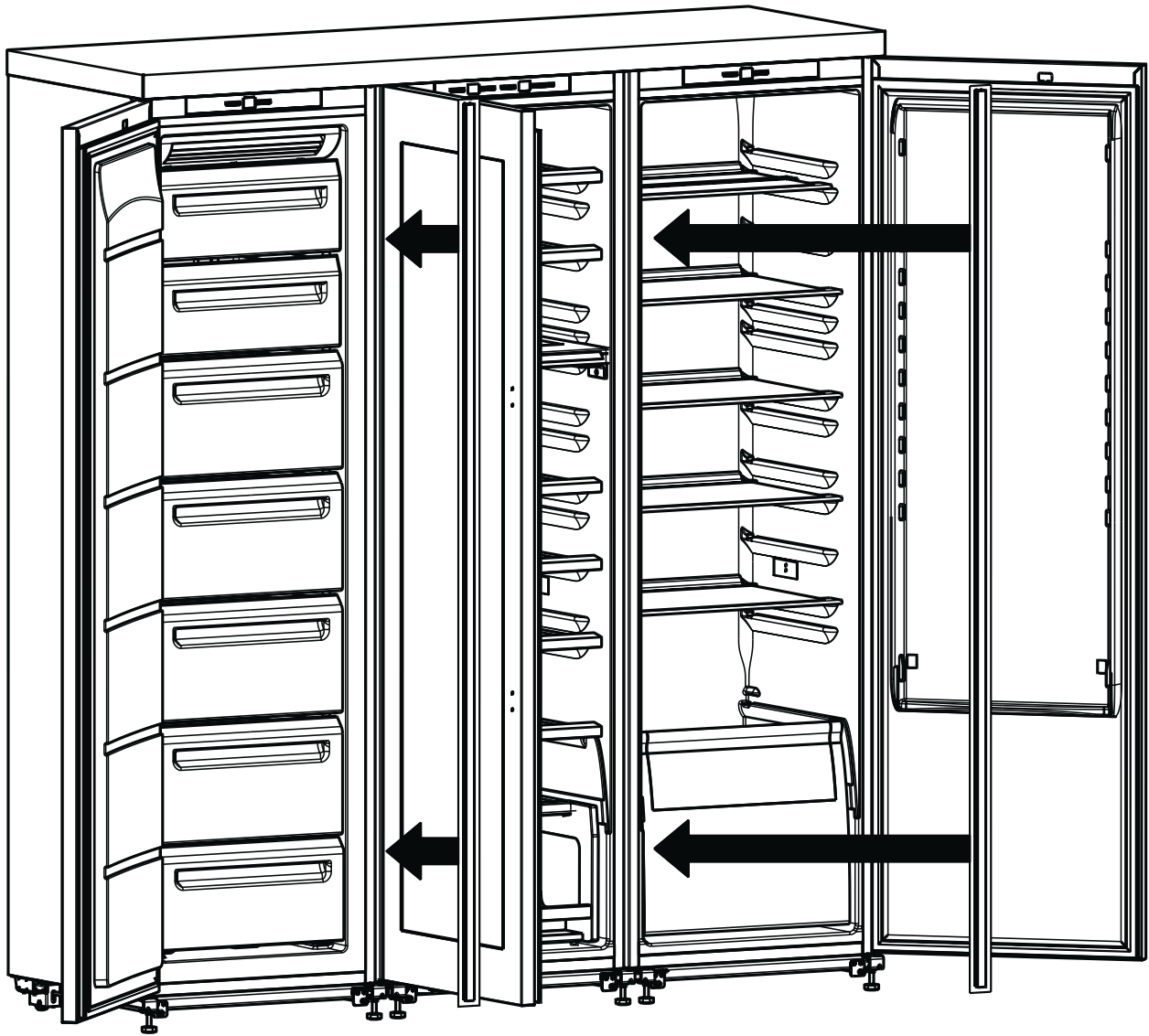
- Before proceeding with the assembly of the top remove the protective film from the panel (7).
- Position the top with the doors open so that the bottom front part fits under the top hinges., see Fig. (A)
- Push the top so that its rear welt is touching the back of the units, see Fig. (B).



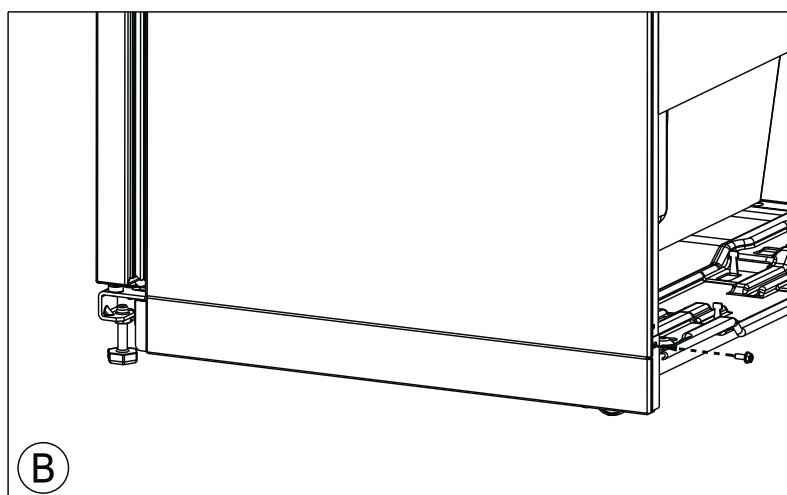
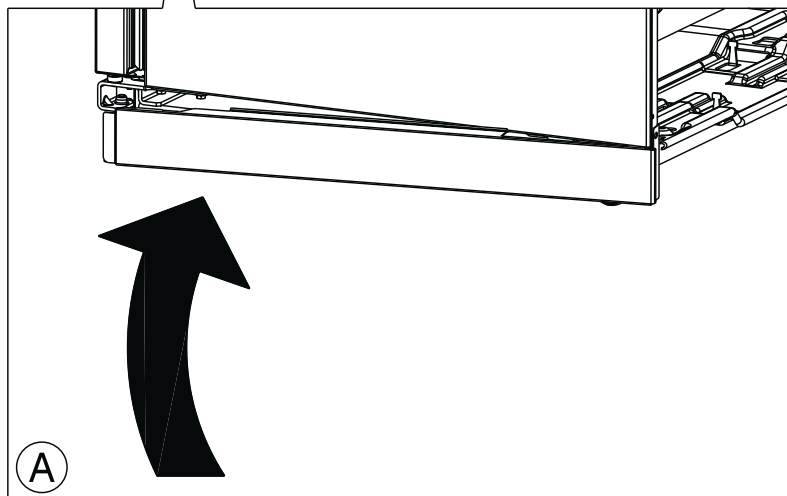
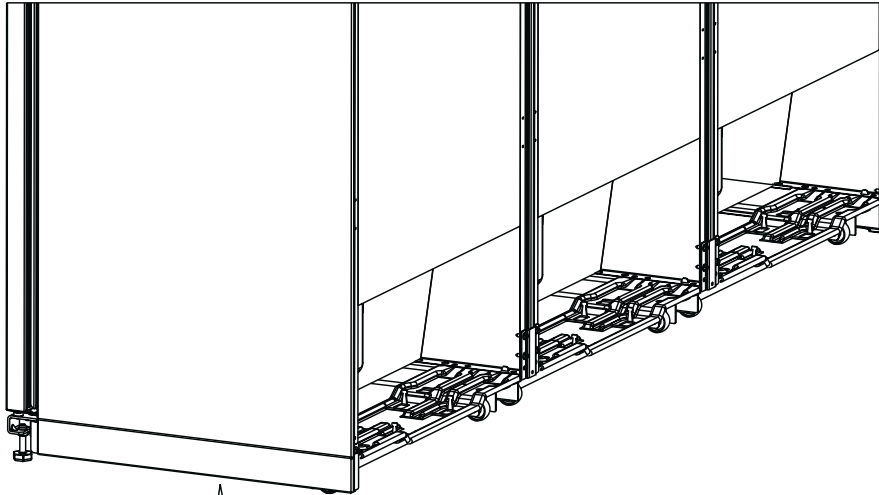
- Fix the top frontaly with three M5X12 screws (1) (bag (1), see Fig. (A)).
- Fix the back of the top with four 4.2x13 self-tapping screws (3) (bag (3), see Fig. (B)).



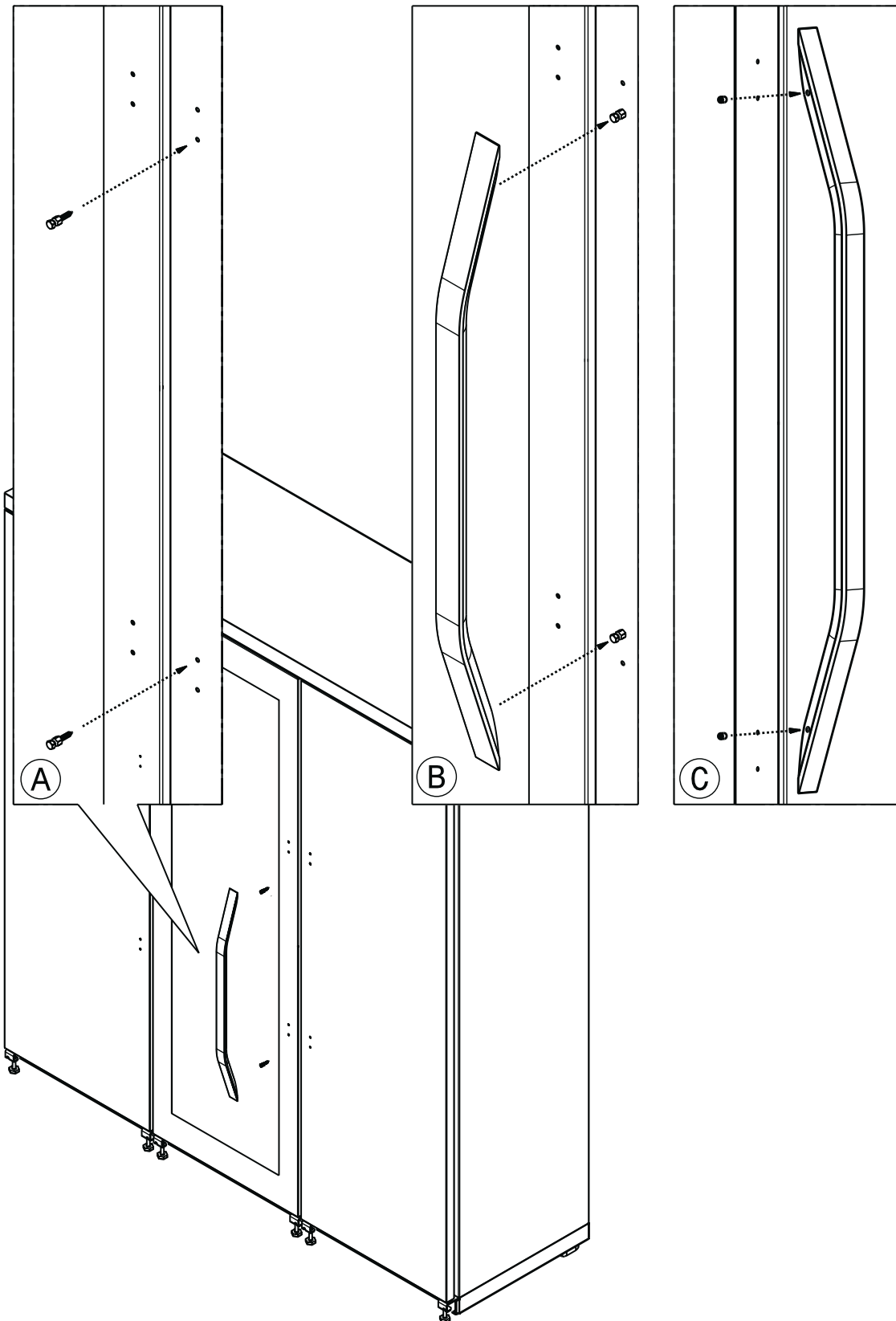
- Fit the trims "II" between the units (freezer/wine cooler - wine cooler/cooler) by pressing along the entire profiles, see figure below.



- Before proceeding with the fixing of (9,10) side strips remove the protective film.
- Insert the side strip, see fig. (A)
- Align the outside of the side strip with the side of the unit and fix it with a 4.2x13 self-tapping screw (3) (bag 3).
- Repeat the operation for the left side, see fig. (B).



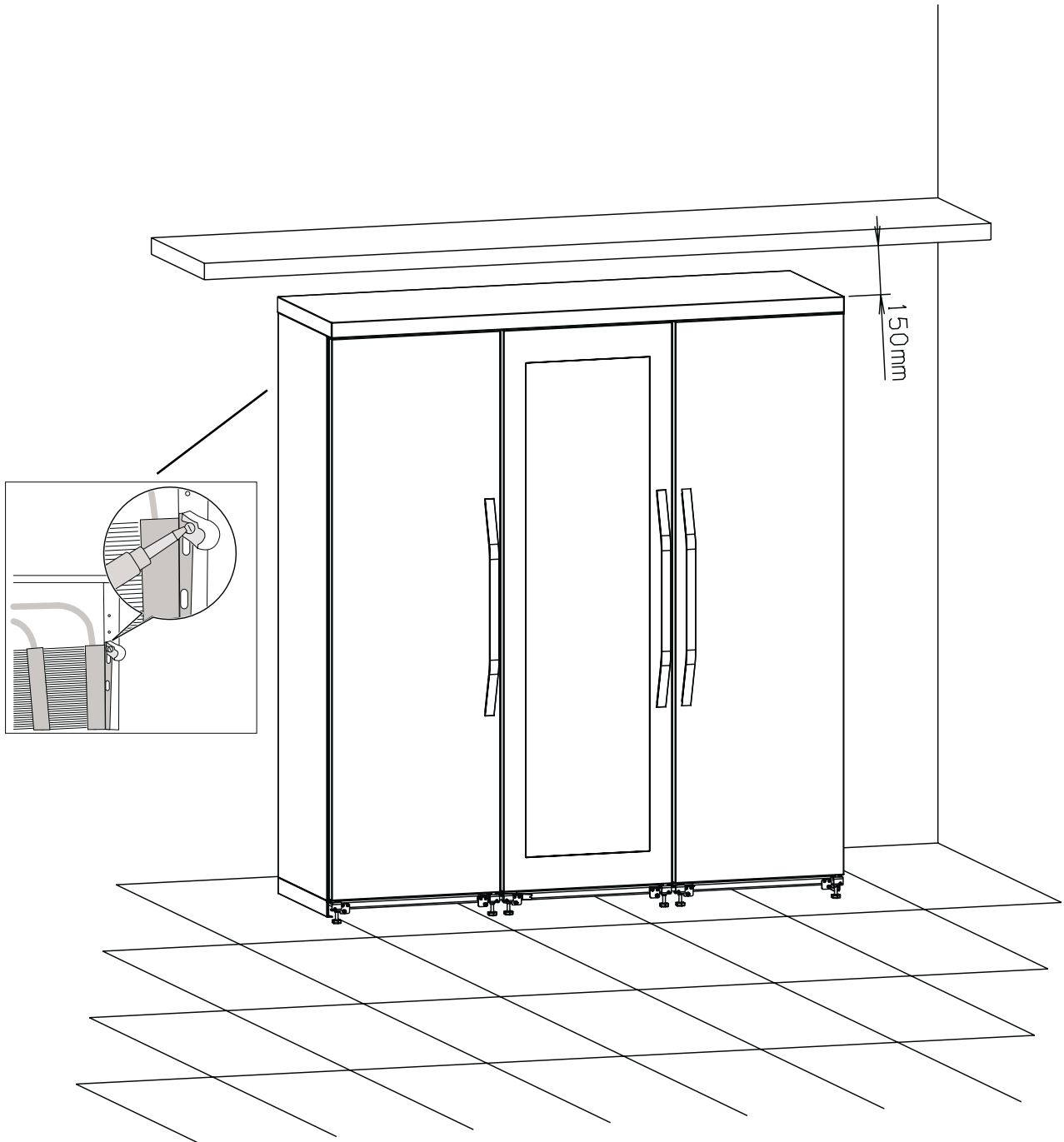
- Fit the handles of the three appliances, as shown in figures A, B and C.
- The pivots and grub screws are included in the handle-kit.
- Screw the two hexagonal head pivots (13), see Fig. (A).
- Insert the handle holes in the pivots fixed on the door, see Fig. (B).
- Secure the handle with two M5x8 grub screws, see Fig. (C).



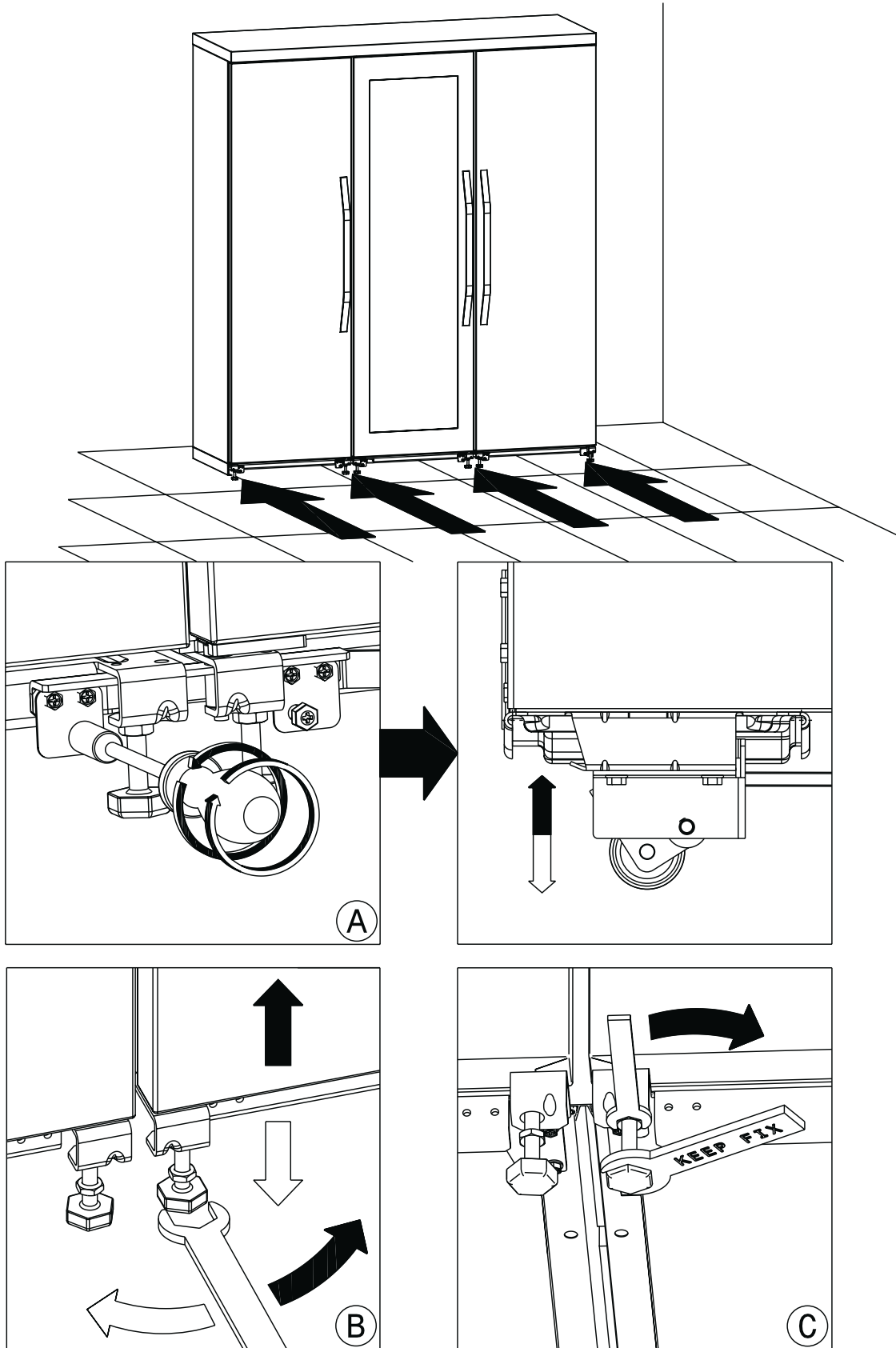
You should also ensure that air can circulate freely around the back and the top of the cabinet.

Position the assembled Side by Side:

- At least 150 mm from any overhanging kitchen furniture.
- Install the appliance.
- Inside the appliance you find two spacers (20) which must be fitted. Slacken the screws and insert the spacer under the screw head, then re-tighten the screws.



- After the positioning of the appliance, verify the right position with a level.
- If necessary regulate the rear feet and front feet to level the appliances. See Fig. (A) and Fig. (B).
- Lock the M8 (4) nuts, see Fig. (B).



- Before proceeding with the fixing of the plinth (8) remove the protective film.
- Fit the plinth (8) so that the inner hook couples with the joining bracket as shown in the illustration (see Fig. B). The plinth must be introduced under the wine cooler door stopper (see Fig. A).
- Fix the front of the plinth (8) with three M5x12 screws (1) (bag(1)) see Fig. (C)

