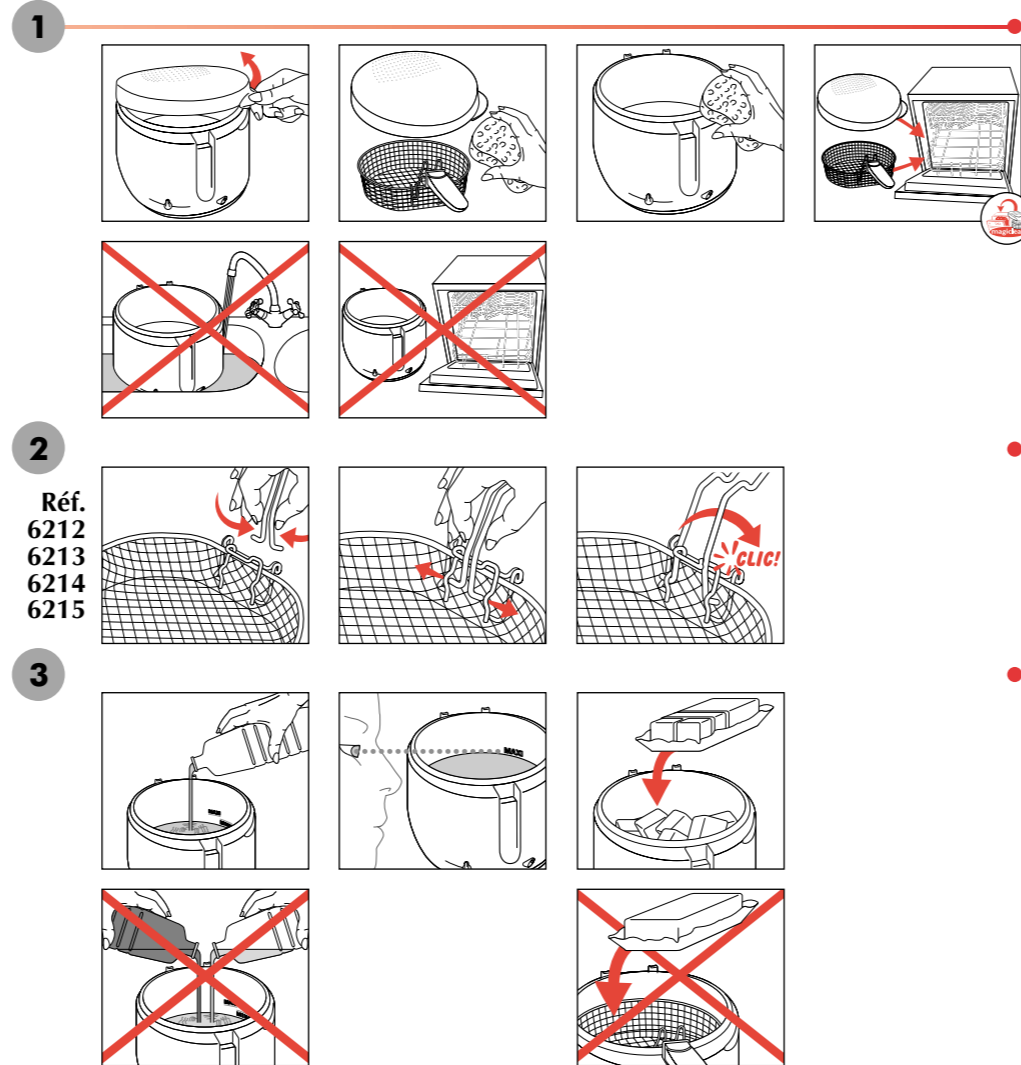
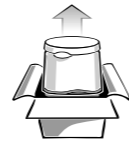
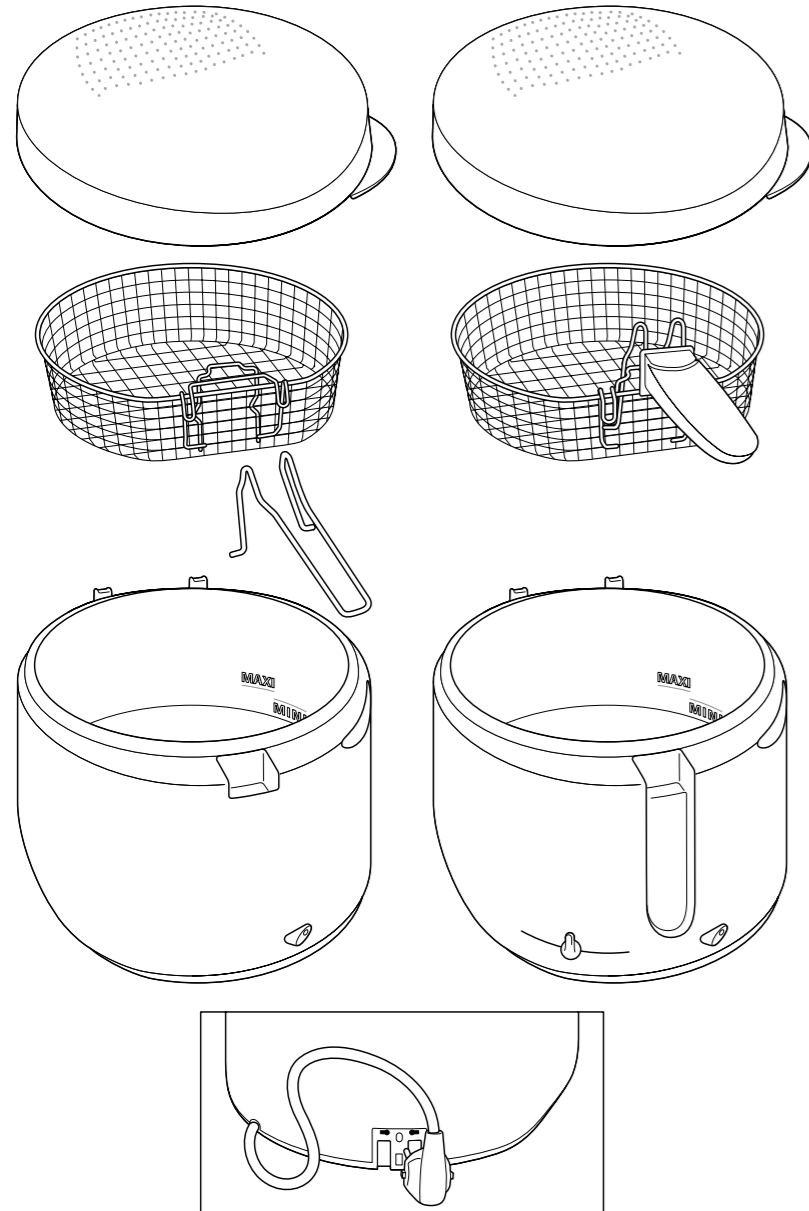
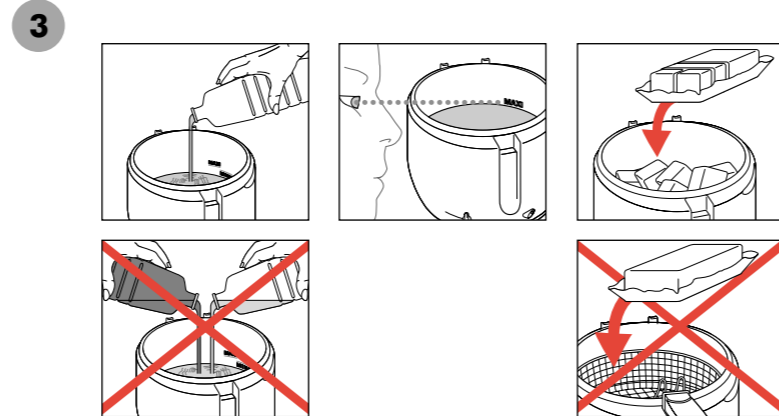


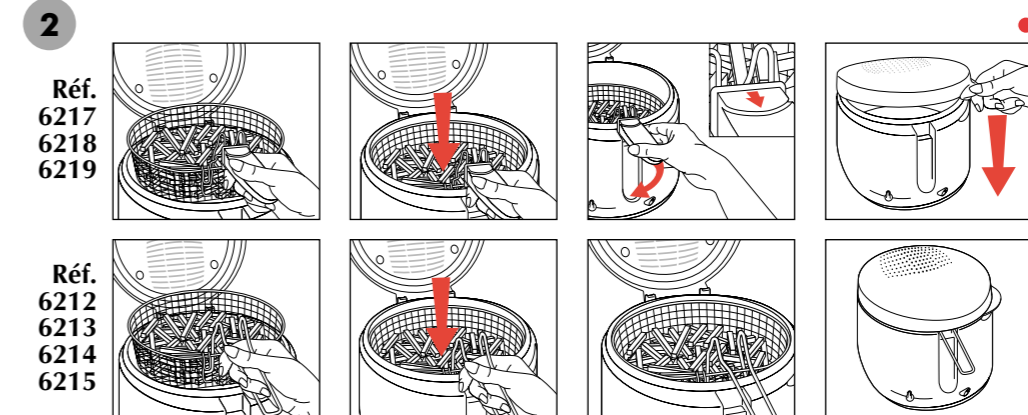
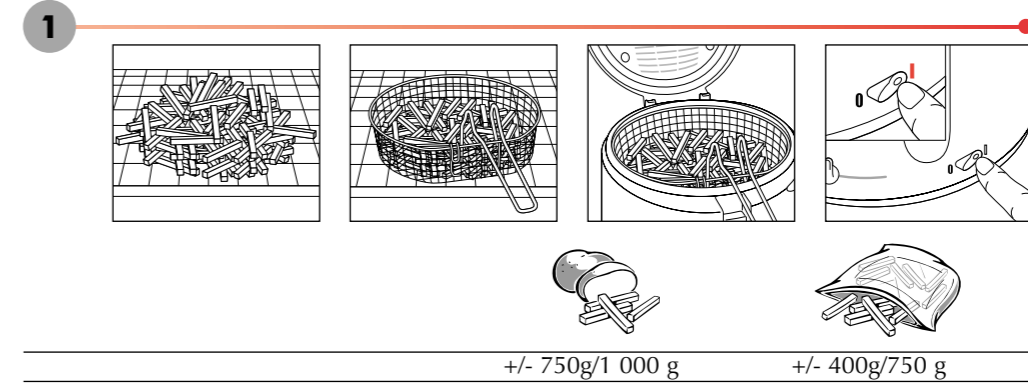
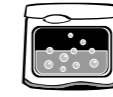
Prissima



Réf.
6212
6213
6214
6215

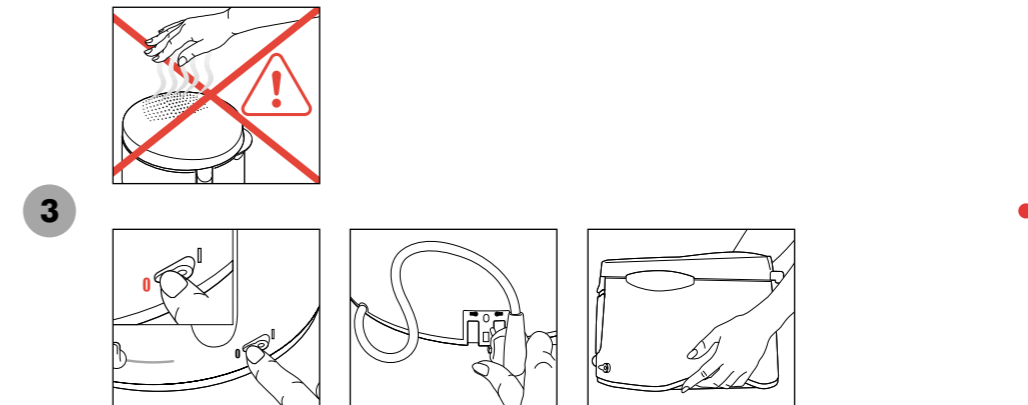


Min.	1,9 L	1 660 g
Max.	2,1 L	1 910 g



Réf.
6217
6218
6219

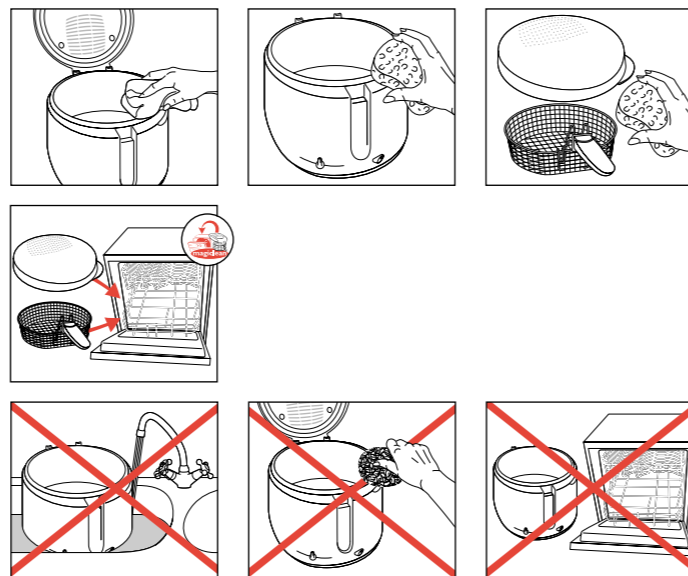
Réf.
6212
6213
6214
6215



Prissima



1



1



	Nb			
		1 kg	190°C	+/- 11 - 15 min.
		350/400 g	190°C	+/- 4 - 5 min.
	8 - 10		190°C	+/- 7 - 9 min.
	2		180°C	+/- 12 - 15 min.
	1 - 2		160°C	+/- 6 - 8 min.
	6		160°C	+/- 3 - 4 min.
		200 g	150°C	+/- 4 - 6 min.
	10 - 12		170°C	+/- 9 - 11 min.
	4		170°C	+/- 5 - 7 min.
	4		170°C	+/- 4 - 6 min.

***	Nb			
		750 g	190°C	+/- 11 - 15 min.
	2	300 g	190°C	+/- 4 - 6 min.
	16	275 g	190°C	+/- 3 - 4 min.
	12	180 g	190°C	+/- 3 - 4 min.